

## INDUCED ARTHRITIS AFFECTS TESTES OF WHITE RATS

Teshayev Sh.<sup>1</sup>

Khabibullayev T.<sup>2</sup>

*Bukhara State Medical Institute*

### KEYWORDS

AIA induction, hyaluronidases, Morphometric-stereological, spermatogenic cycle, AIA group, prostate.

### ABSTRACT

In the testes, AIA promoted histopathological changes characterized by an increase in the percentage of abnormal tubules and reduction in the height of the seminiferous epithelium, daily production of spermatozoa, and cellular proliferation. In the prostate, AIA decreased the luminal volume of the secretory ducts. In condition of androgenic deprivation due to the orchiectomy, AIA induced proliferation of the prostatic epithelium.

2181-2675/© 2025 in XALQARO TADQIQOT LLC.

DOI: **10.5281/zenodo.15386531**

This is an open access article under the Attribution 4.0 International (CC BY 4.0) license (<https://creativecommons.org/licenses/by/4.0/deed.ru>)

### INTRODUCTION

Rheumatoid arthritis (RA) is a chronic, autoimmune, and destructive inflammatory arthropathy, manifested by severe pain, edema, loss of mobility, and disability. The etiology of RA is not completely understood, but it is known that this disease affects approximately 0.5 to 1% of the world population, predominantly women in the age-group of 30 to 50 years (Choy & Panayi, 2001; Khurana & Berney, 2005; Mota et al., 2012).

The RA-related joint damage begins with infiltration of macrophages and activation of CD4 + T lymphocytes, leading to hyperplasia and increased vascularization of the synovial membrane. In addition, cytokines such as interleukin-1 (IL-1), interleukin-6 (IL-6), tumor necrosis factor alpha (TNF- $\alpha$ ), and other inflammatory mediators such as prostaglandins and free radicals are produced in the synovial fluid. This inflammatory process in synovium is aggravated by the action of enzymes such as metalloproteinases, hyaluronidases, and cyclooxygenases.

Adjuvant-induced arthritis—AIA protocol

Arthritis was induced in rats by an intradermal injection of 100  $\mu$ L of heat-inactivated Mycobacterium tuberculosis (Difco, Detroit, MI, USA) in mineral oil at 50 mg/mL, in the right hind paw under 2,2,2-tribromoethanol anesthesia (250 mg/kg, i.p.). Sham-immunized

<sup>1</sup> Bukhara State Medical Institute named after Abu Ali ibn Sina, Uzbekistan, Bukhara, st. A. Navoi. 1

<sup>2</sup> Bukhara State Medical Institute named after Abu Ali ibn Sina, Uzbekistan, Bukhara, st. A. Navoi. 1

animals were submitted to the same procedure, but only received the mineral oil. The earliest inflammatory signs of AIA in the contralateral hind paw, characterized by mild erythema as well as paws' diameter and mass, were usually observed around 15–20 days post-immunization.

ance (0.1 mg accuracy).

The animals that showed no inflammation signs on the hind paw 20 days post-AIA induction were excluded.

The effectiveness of the AIA induction was verified by the increment in the diameter of the left tibiotarsal joint, quantified by an analog pachymeter (0.05 mm accuracy) on the 40th<sup>o</sup> day post-AIA induction, immediately after the animals' death. In order to confirm the articular inflammation, left hind paws were also dissected just before of the tibiotarsal joint and weighed in analytical balance (0.1 mg accuracy).

Morphometric-stereological analyses of the testes

In each testis, belonging to SHAM and AIA animals, at least two hundred seminiferous tubules (stage IX of the seminiferous epithelium cycle) were randomly selected (Goncalves et al., 2017). The tubular in the testes, one hundred random tubules per experimental group were also captured, independently of the stage of the spermatogenic cycle. Abnormalities as immature germ cells in the lumen, presence of vacuoles in the seminiferous epithelium, and cellular disaggregation were considered in the analysis (Goncalves et al., 2017). To evaluate the Leydig cell density in the interstitium, 10 histological fields per testis were randomly captured from sections stained with 1% toluidine blue in 1% borax. The Leydig cell number was counted at 10009 magnification in the fixed total area of 14.24 lm (Mansano et al., 2018) considering for its identification the morphological characteristics as nucleus with chromatin of heterogeneous aspect, evident nucleoli and aggregation around to blood vessels.

## RESULTS

Biometric analysis

AIA and orchiectomy promoted significant decreasing in body weight in relation to the SHAM. Significant decrease in ventral prostate wet weight was observed in the ORQ and ORQ/AIA groups. On the other hand, the arthritis only did not significantly influence the reduction in prostate wet weight. Significant increase in left hind paw wet weight and diameter (contralateral to the paw that underwent induction) was observed in the AIA and ORQ/AIA groups. The AIA promoted significant increase in gonadosomatic index in relation to the SHAM (Table 1, Fig. 2).

Histopathological and morphometrical analyses of the testes

The testes from the SHAM animals exhibited normal and regular histological organization, with the presence of seminiferous tubules exhibited the classic structure with a central lumen and seminiferous epithelium, which contained all spermatogenic lineage cells and Sertoli cells in the tubular periphery (Fig. 3a,d,g). Leydig cell aggregates were observed in the interstitial tissue and exhibited a normal morphologic pattern (Fig. 3d).

In the AIA group, the testicular tissue exhibited the same structural organization and classic structure in several seminiferous tubules as observed in the SHAM group (Fig. 3b,e,h). The interstitial tissue exhibited also the same structural pattern observed in testes of sham rats (Fig. 3h). However, many seminiferous tubules of the arthritis rats exhibited cell desquamation of the seminiferous epithelium into the tubular lumen, indicating the premature detachment of germ cells (Fig. 3c, f-inset). The arthritis also induced other alterations such as depletion of some germ cells, spermatogonia and Sertoli cell vacuolization, and disaggregation of germ cells in the epithelium germinative, indicating the broke of the cytoplasmic bridges (Fig. 3f,f-inset,i).

Morphometrical analysis of the testes revealed that AIA led to a significant reduction in height of seminiferous epithelium (Fig. 3j). On the other hand, no significant difference was observed in diameter of the seminiferous tubules (Fig. 3k). In addition, the percentage of abnormal seminiferous tubules exhibiting damages increased significantly in AIA when compared to the SHAM group (Fig. 3l).

#### Daily sperm production and Leydig cell density

In the AIA group, a significant reduction in daily sperm production per testis was observed relative to the sham rats cells in the epithelium germinative, indicating the broke of the cytoplasmic bridges (Fig. 3f,f-inset,i).

Morphometrical analysis of the testes revealed that AIA led to a significant reduction in height of seminiferous epithelium (Fig. 3j). On the other hand, no significant difference was observed in diameter of the seminiferous tubules (Fig. 3k). In addition, the percentage of abnormal seminiferous tubules exhibiting damages increased significantly in AIA when compared to the SHAM group (Fig. 3l).

#### Daily sperm production and Leydig cell density

In the AIA group, a significant reduction in daily sperm production per testis was observed relative to the sham rats



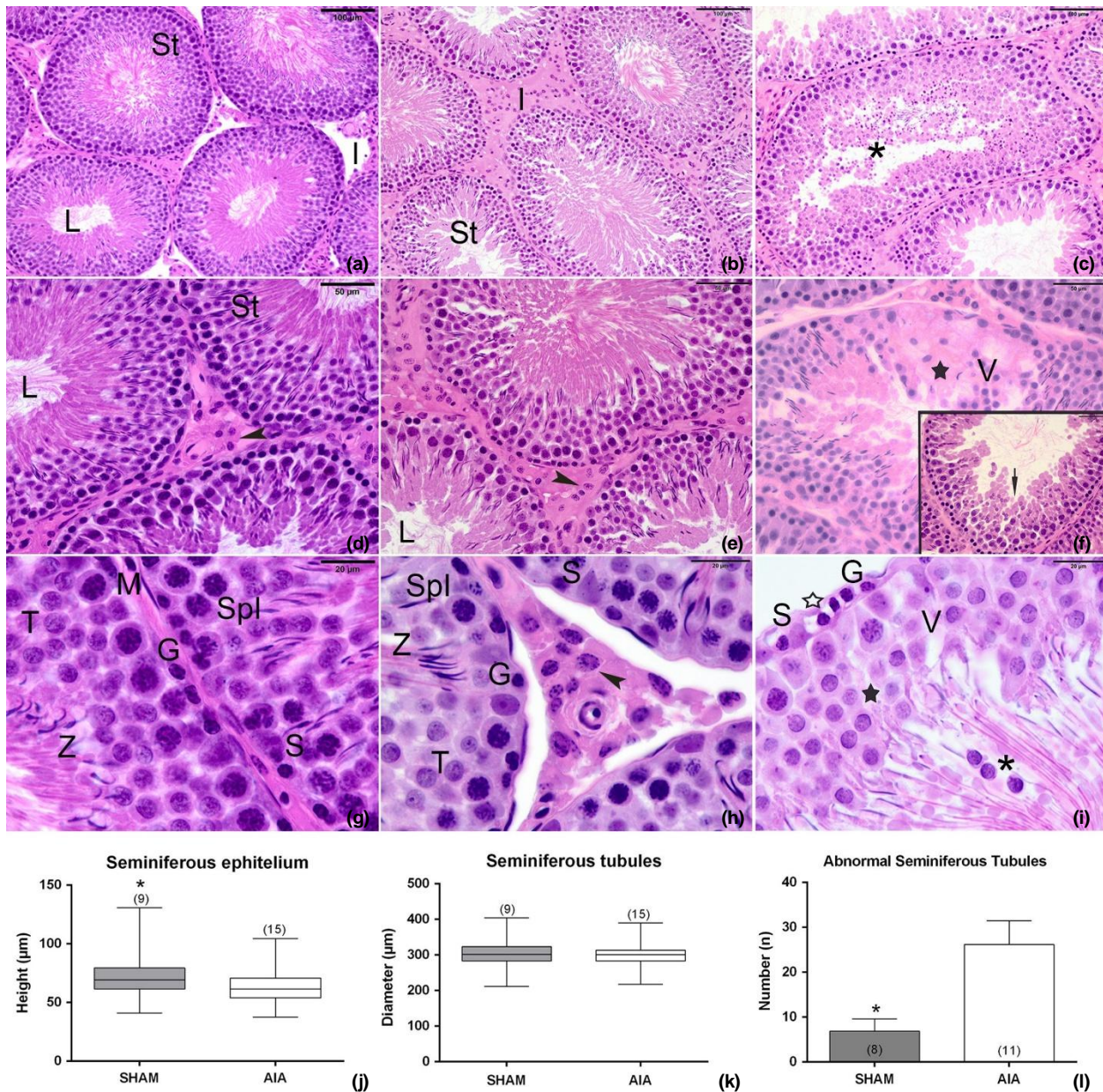


Figure 3 Photomicrographs of global histology of testis from sham rats (a, d, g) and, arthritic rats (b, c, e, f, h, i); morphometry of the seminiferous tubules (j, k); percentage of abnormal tubules (l). In the SHAM groups, the testis exhibited morphologically normal seminiferous tubules (St), with spermatozoa (Z), and standard interstitial tissue (I) with Leydig cells (arrowhead). In the AIA group, seminiferous tubules with normal morphology were observed in the testes (b, e, h). Despite this, note that several seminiferous tubules of the AIA rats exhibited damage signals, characterized by cell desquamation of the seminiferous epithelium into the tubular lumen (\*) (c, f-inset), loss of some germ cells (filled star), vacuolization in spermatogonia and Sertoli cell (non-filled star) and presence of vacuoles (V), and disaggregation of germ cells in the seminiferous epithelium (arrow) (1f, f-inset, i). Abbreviations: G = spermatogonia; L = lumen; S = Sertoli cells; T = spermatids; Spl = primary spermatocytes; M = peritubular cells. Staining: hematoxylin and eosin. Legend: Data of height and diameter of seminiferous tubules are expressed as median (Min to Max) and were

analyzed by Mann–Whitney test. Data of abnormality of seminiferous tubules are expressed as meanDP and were analyzed by t test. \* $p \leq 0.05$  significant difference in relation to the AIA group. In parentheses, number of independent determinations.

**In conclusion**, the AIA promoted an increase in abnormal seminiferous tubules and reduction in the cellular proliferation, leading to a decrease in both the height of the seminiferous epithelium and daily production of spermatozoa with impact, therefore, in the spermatogenic efficiency. In the prostate, the arthritis mainly decreased the luminal volume of the secretory ducts, suggesting a decrease in its secretory activity and, consequently, promoting a mild dilation of the stromal tissue. These effects on male genital system, that are present on the 40th day post-AIA induction, probably are a consequence of a transitory hypoandrogenism, which is quite evident around the 15th day. On the other hand, in long-lasting androgenic deprivation condition due to the orchiectomy, AIA induced proliferation of the prostatic epithelium. This suggests that the articular inflammatory process may have direct repercussions upon the prostate, regardless of the AIA-induced hypoandrogenism.

## REFERENCES

1. Bruot BC & Clemens JW. (1987) Effect of adjuvant-induced arthritis on serum luteinizing hormone and testosterone concentrations in the male rat. *Life Sci* 41, 1559–1565.
2. Bruot BC & Clemens JW. (1992) Regulation of testosterone production in the adjuvant-induced arthritic rat. *J Androl* 13, 87–92.
3. Bupp MRG & Jorgensen TN. (2018) Androgen-induced immunosuppression. *Front Immunol* 9, 794.
4. Carageorgiou HK, Stratakis CA, Damoulis PD, Varonost DD, Messari ID, Sideris A & Sfrikakis AP. (2005) Reversible plasma testosterone levels reduction after gentamicin administration and Freund's Adjuvant Arthritic in Rats. *Indian J Physiol Pharmacol* 49, 443–448.
5. Choy EHS & Panayi GS. (2001) Cytokine pathways and joint inflammation in rheumatoid arthritis. *N Engl J Med* 344, 907–916.
6. Chung JI, Barua S, Choi BH, Min BH, Han HC & Baik EJ. (2012) Antiinflammatory effect of low intensity ultrasound (LIUS) on complete Freund's adjuvant-induced arthritis synovium. *Osteoarthritis Cartilage* 20, 314–322.
7. Clemens JW & Bruot BC. (1989) Testicular dysfunction in the adjuvantinduced arthritic rat. *J Androl* 10, 419–424.
8. Cojocaru M, Cojocaru IM, Silosi I, Vrabie CD & Tanasescu R. (2010) Extra-articular manifestations in rheumatoid arthritis. *Maedica* 5, 286– 291.
9. Costa CFP, Gobbo MG, Taboga SR, Pinto-Fochi ME & Goes RM. (2016) Melatonin intake since weaning ameliorates steroidogenic function and sperm motility of streptozotocin-induced diabetic rats. *Andrology* 4, 526–541.